

Recent Stock Trading Picks

The markets have been extremely conducive to stock trading picks on the short side of the market. So, unsurprisingly, the large majority of recent stock picks have been on that side of the markets.

The following is a look at several recent stock picks...



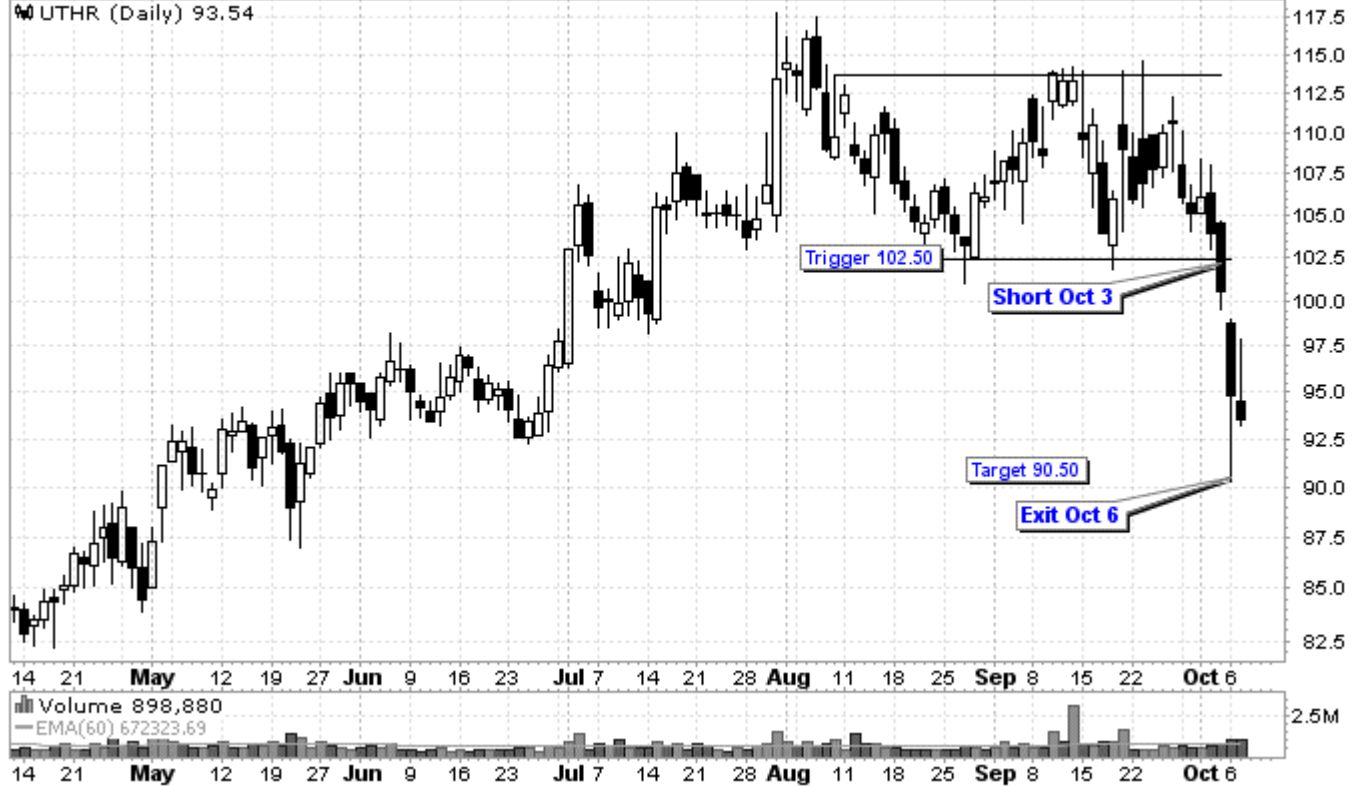
UTHR (United Therapeutics Corp.) Nasdaq GS

© StockCharts.com

7-Oct-2008

Open 94.52 High 97.94 Low 93.22 Close 93.54 Volume 898.9K Chg -1.30 (-1.37%)

UTHR (Daily) 93.54



HOLX (Hologic, Inc.) Nasdaq GS

© StockCharts.com

7-Oct-2008

Open 15.98 High 16.29 Low 15.32 Close 15.37 Volume 5.0M Chg -0.76 (-4.71%)

HOLX (Daily) 15.37



GOOG (Google, Inc.) Nasdaq GS

7-Oct-2008

© StockCharts.com

Open 373.33 High 374.98 Low 345.37 Close 346.01 Volume 11.1M Chg -25.20 (-6.79%)



GRMN (Garmin Ltd.) Nasdaq GS

7-Oct-2008

© StockCharts.com

Open 28.76 High 29.02 Low 26.30 Close 27.01 Volume 1.9M Chg -1.59 (-5.56%)



FTI (FMC Technologies, Inc.) NYSE

7-Oct-2008

Open 39.51 High 40.65 Low 37.87 Close 37.87 Volume 5.4M Chg -0.85 (-2.20%)

© StockCharts.com



CYBS (CyberSource Corp.) Nasdaq GM

7-Oct-2008

Open 14.00 High 14.49 Low 13.48 Close 13.51 Volume 964.5K Chg -0.61 (-4.32%)

© StockCharts.com



CLR (Continental Resources Inc.) NYSE

© StockCharts.com

7-Oct-2008

Open 30.87 High 32.88 Low 25.99 Close 26.01 Volume 2.5M Chg -3.39 (-11.53%)

CLR (Daily) 26.01



BCY (Bucyrus Intl, Inc.) Nasdaq GS

© StockCharts.com

7-Oct-2008

Open 35.22 High 36.74 Low 30.26 Close 30.83 Volume 2.4M Chg -3.57 (-10.38%)

BCY (Daily) 30.83



MXIM (Maxim Integrated Products, Inc.) PINK

© StockCharts.com

7-Oct-2008

Open 15.80 High 16.21 Low 14.03 Close 14.25 Volume 2.2M Chg -1.50 (-9.52%)

MXIM (Daily) 14.25



ITW (Illinois Tool Works, Inc.) NYSE

© StockCharts.com

7-Oct-2008

Open 38.11 High 39.44 Low 36.10 Close 36.15 Volume 7.0M Chg -2.95 (-7.54%)

ITW (Daily) 36.15



HAS (Hasbro, Inc.) NYSE

7-Oct-2008

Open 31.93 High 32.31 Low 30.50 Close 30.51 Volume 3.1M Chg -1.21 (-3.81%)

© StockCharts.com

HAS (Daily) 30.51



DVN (Devon Energy Corp.) NYSE

7-Oct-2008

Open 79.17 High 81.39 Low 71.53 Close 72.54 Volume 7.8M Chg -4.86 (-6.28%)

© StockCharts.com

DVN (Daily) 72.54



BNI (Burlington Northern Santa Fe Corp.) NYSE

© StockCharts.com

7-Oct-2008

Open 85.49 High 87.10 Low 80.54 Close 80.67 Volume 5.1M Chg -4.31 (-5.07%)

BNI (Daily) 80.67



ADSK (Autodesk, Inc.) Nasdaq GS

© StockCharts.com

7-Oct-2008

Open 28.48 High 28.89 Low 26.86 Close 26.87 Volume 4.4M Chg -1.59 (-5.59%)

ADSK (Daily) 26.87

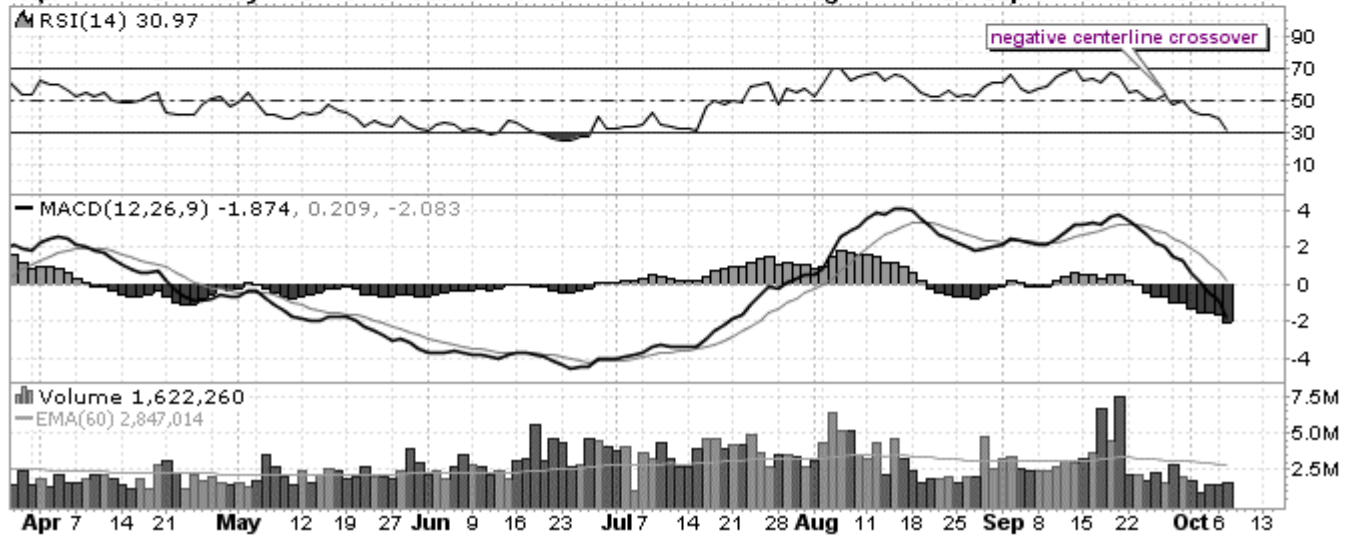


SHLD (Sears Holdings Corp.) Nasdaq GS

© StockCharts.com

7-Oct-2008

Open 86.03 High 86.15 Low 78.30 Close 78.79 Volume 1.6M Chg -6.95 (-8.11%)



IP (International Paper Co.) NYSE

© StockCharts.com

7-Oct-2008

Open 24.85 High 25.07 Low 22.27 Close 22.40 Volume 7.3M Chg -2.18 (-8.87%)



LVS (Las Vegas Sands Corp.) NYSE

7-Oct-2008

Open 21.51 High 22.10 Low 16.80 Close 16.99 Volume 6.3M Chg -3.86 (-18.51%)

© StockCharts.com



BCSI (Blue Coat Systems, Inc.) Nasdaq GM

7-Oct-2008

Open 11.84 High 11.84 Low 10.46 Close 10.54 Volume 1.0M Chg -1.16 (-9.91%)

© StockCharts.com



ERIC (Ericsson Telephone Co.) Nasdaq GS
 7-Oct-2008

© StockCharts.com

Open 7.68 High 7.75 Low 7.01 Close 7.05 Volume 11.7M Chg -0.74 (-9.50%)



DE (Deere & Co.) NYSE
 29-Sep-2008

© StockCharts.com

Open 54.15 High 54.24 Low 46.18 Close 47.76 Volume 10.9M Chg -7.57 (-13.68%)



UNH (Unitedhealth Group, Inc.) NYSE

© StockCharts.com

29-Sep-2008

Open 25.26 High 26.00 Low 21.00 Close 21.00 Volume 8.5M Chg -4.81 (-18.64%)



As you can see it's been a very good period for shorting stocks. In fact, it has been an even better phase for trading options. In the next issue we'll take a look at the huge number of winning options picks from the past few weeks.

That's it for this issue of Purely Technical.

Good luck with your trading!

Asher Pinto

TheMarketMessenger.com

Disclaimer:

TheMarketMessenger.com is owned by *TheMarketMessenger, LLC*. All material presented within TheMarketMessenger.com website, including this newsletter, has been provided for general informational purposes only. It does not constitute an offer to sell or a solicitation of an offer to buy any security or financial product that may be referenced herein. Further, the information contained in this informational newsletter does not constitute investment advice or investment advisory services. All securities trading, whether in stocks, options, or other investment vehicles, is speculative in nature and involves substantial risk of loss. We shall not be held responsible for any losses incurred as a result of the use of any information provided herein. You are strongly encouraged to seek personal advice from your professional investment advisor and to make independent investigations before acting on any information that we publish.

Subscribe to *Purely Technical* by visiting <http://www.themarketmessenger.com/>.
