

Good News! Stock Picks Package Reintroduced; Options Picks Package Launched

Have you been considering signing up for a membership to TheMarketMessenger.com but have been holding back because you were only interested in either our Stock Picks or Options Picks sections?

Well, we have some good news for you! By popular demand, we've unbundled our flagship membership package – the *Swing Traders' Package* – and now offer two new packages...

Stock Picks Package (\$49.95/month): Access to Nightly Commentary, Weekly Commentary, Model Portfolio & Stocks Picks sections of Members Area.

Options Picks Package (\$59.95/month): Access to Nightly Commentary, Weekly Commentary, Model Portfolio & Options Picks sections of Members Area.

You can Start Your Membership Today, by signing up at our Membership Services page at – <http://www.themarketmessenger.com/memberships.htm>. We look forward to having you on board!

Several, Mostly Bearish, Trading Setups

There has been a lot of shuffling in the markets over the past few sessions. Last week's winners have become this week's losers and vice versa. The Energy and Metals sectors were flying high while the rest of the market was languishing. That was until the commodities starting to take it on the chin this week. The Financials have been decimated over the past several months but just might have started to recover over the past couple of sessions.

Our Stock and Options Picks lists are currently chock a block full of trading setups. Our research has unearthed several more setups than we could possibly have maintained on those lists at a given point in time. We hope that you find the following 18 or so setups useful. The first two are bullish setups; the rest are bearish...

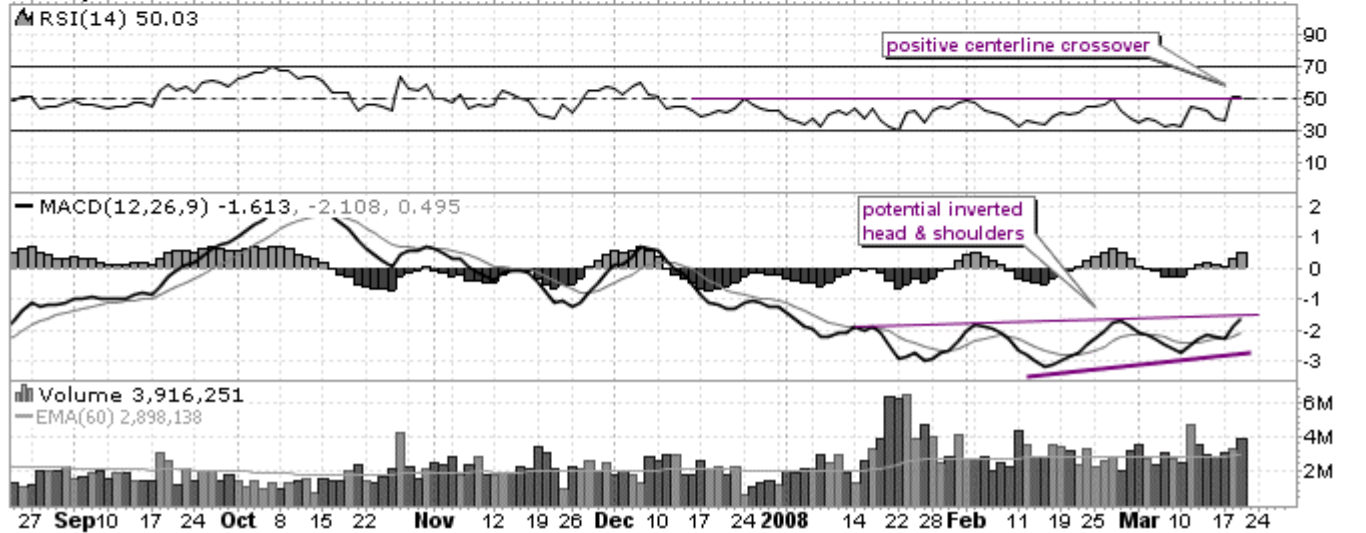


HIG (Hartford Financial Serv) NYSE

© StockCharts.com

19-Mar-2008

Open 71.48 High 73.56 Low 71.24 Close 71.24 Volume 3.9M Chg -0.04 (-0.06%)



AGU (Agrium, Inc.) NYSE

19-Mar-2008

© StockCharts.com

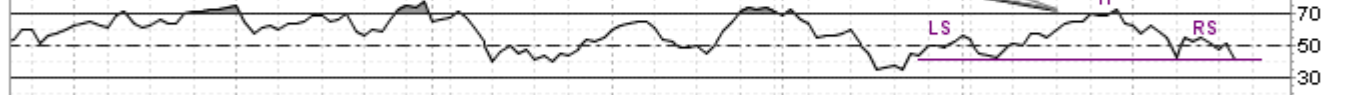
Open 70.98 High 70.98 Low 63.00 Close 63.10 Volume 4.6M Chg -7.15 (-10.18%)

AGU (Daily) 63.10

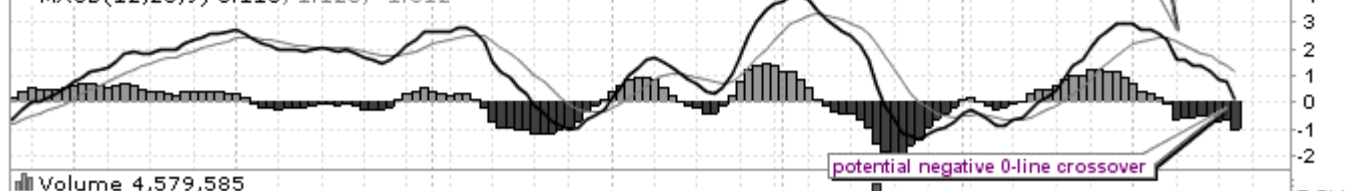


27 Sep10 17 24 Oct 8 15 22 Nov 12 19 26 Dec 10 17 24 2008 14 22 28 Feb 11 19 25 Mar 10 17 24

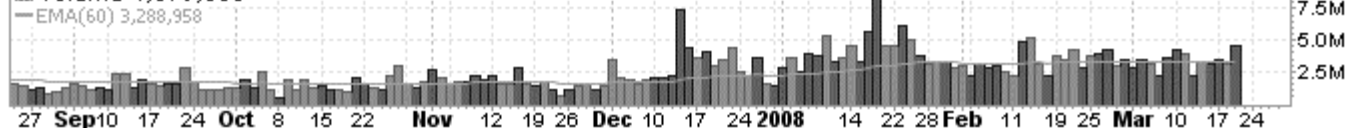
RSI(14) 41.01



MACD(12,26,9) 0.113, 1.126, -1.012



Volume 4,579,585



27 Sep10 17 24 Oct 8 15 22 Nov 12 19 26 Dec 10 17 24 2008 14 22 28 Feb 11 19 25 Mar 10 17 24

ADM (Archer Daniels Midland Co.) NYSE

© StockCharts.com

19-Mar-2008

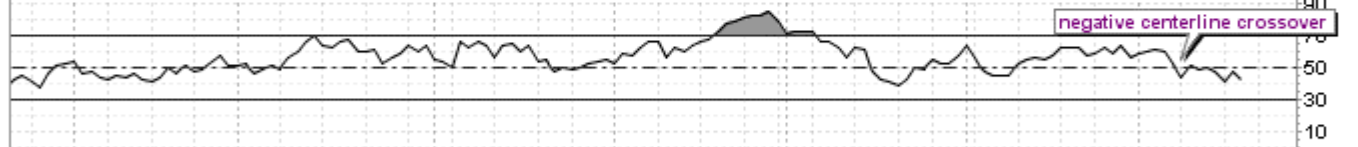
Open 44.02 High 44.02 Low 42.05 Close 42.19 Volume 5.7M Chg -1.33 (-3.06%)

ADM (Daily) 42.19

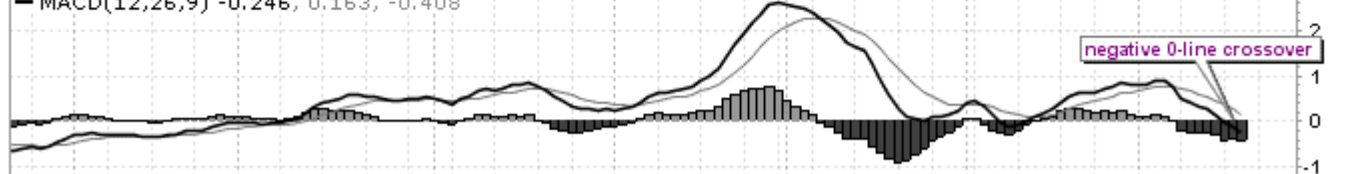
ADM was pushed down from major resistance a couple of weeks ago and is coming upon a rising trendline that has lasted several months. A breaking of that trendline would add to the sell signals that have been provided by RSI and MACD.



RSI(14) 42.23

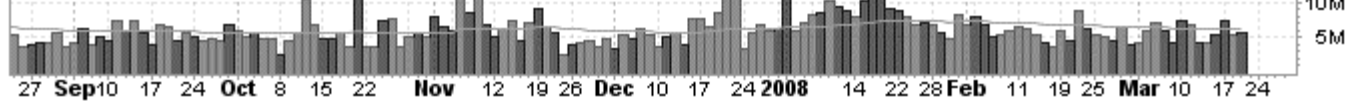


MACD(12,26,9) -0.246, 0.163, -0.408



Volume 5,650,745

EMA(60) 6,170,819



BIDU (Baidu.com, Inc) Nasdaq GM

© StockCharts.com

19-Mar-2008

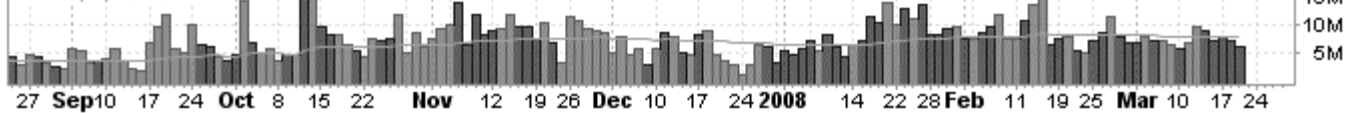
Open 249.50 High 249.89 Low 219.93 Close 220.21 Volume 6.2M Chg -26.32 (-10.68%) ▼

▲ BIDU (Daily) 220.21



Volume 6,181,181

—EMA(60) 7,911,978



CAM (Cameron International Corp.) NYSE

© StockCharts.com

19-Mar-2008

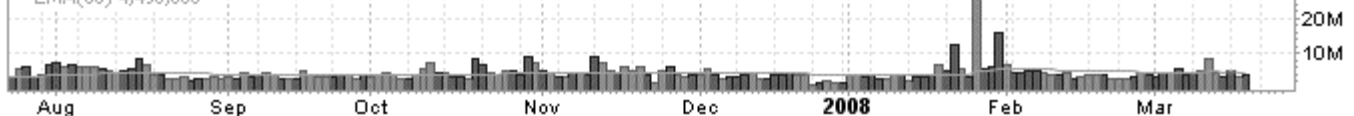
Open 42.49 High 42.87 Low 39.04 Close 39.07 Volume 3.6M Chg -3.06 (-7.26%) ▼

▲ CAM (Daily) 39.07



Volume 3,559,616

—EMA(60) 4,498,886



CHK (Chesapeake Energy Corp.) NYSE

© StockCharts.com

19-Mar-2008

Open 47.43 High 47.69 Low 44.19 Close 44.21 Volume 11.3M Chg -3.70 (-7.72%)

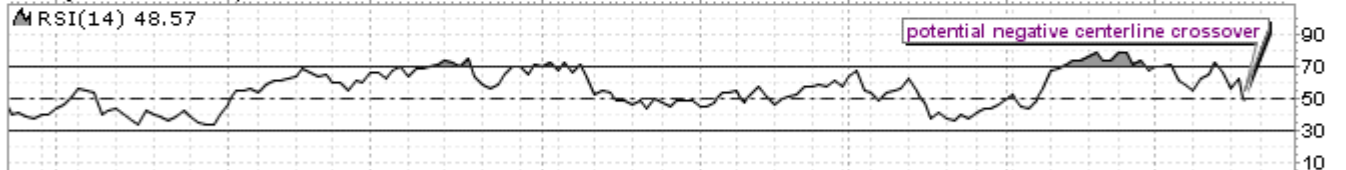
CHK (Daily) 44.21

CHK is showing a negative divergence on MACD and a potential negative centerline crossover on RSI. If minor support gives way, the stock could soon be retesting the broken resistance level at 41. If things get really bad, a move back down to the level of January lows isn't out of the question.



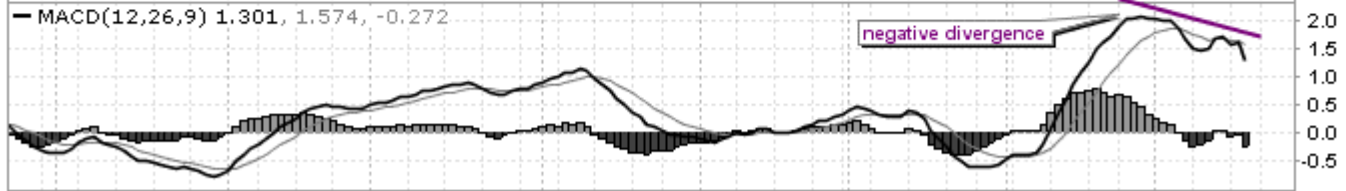
RSI(14) 48.57

potential negative centerline crossover



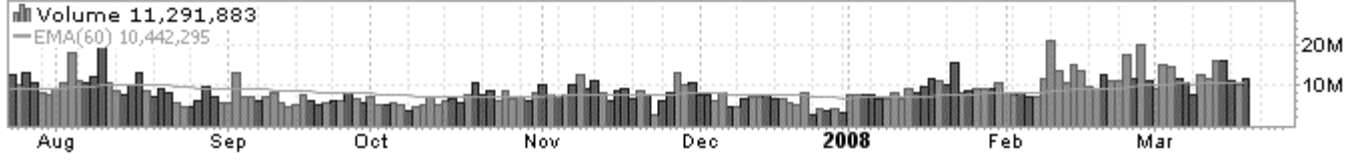
MACD(12,26,9) 1,301, 1,574, -0.272

negative divergence



Volume 11,291,883

EMA(60) 10,442,295

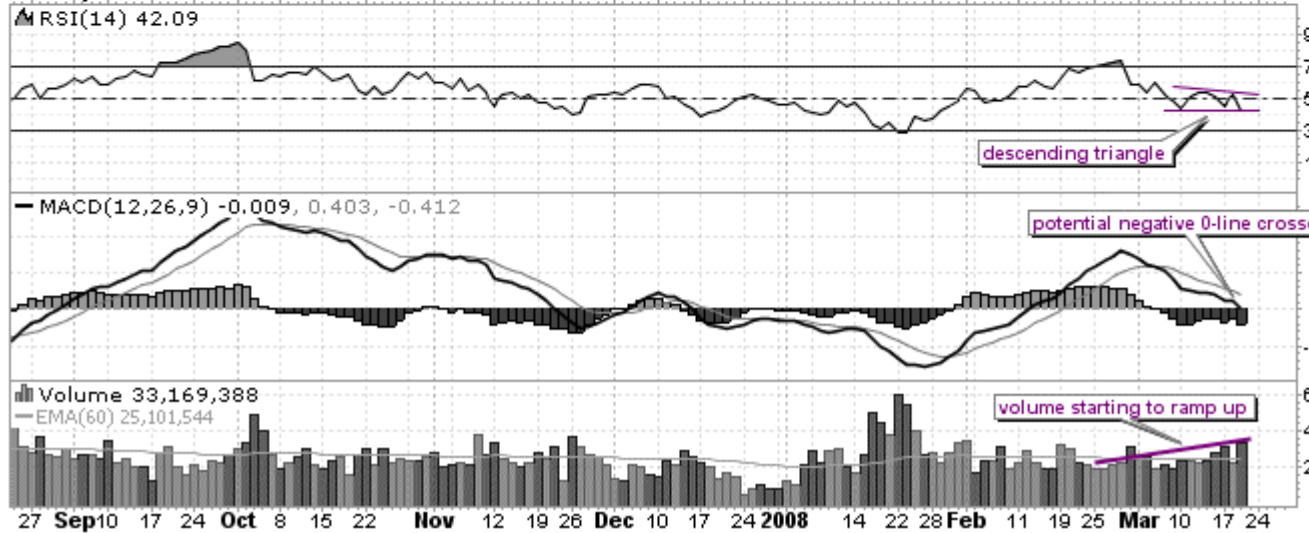


RIO (Companhia Vale do Rio Doce) NYSE

© StockCharts.com

19-Mar-2008

Open 33.49 High 33.57 Low 31.00 Close 31.05 Volume 33.2M Chg -2.77 (-8.19%)



DELL (Dell Inc.) Nasdaq GS
19-Mar-2008

© StockCharts.com

Open 20.12 High 20.50 Low 19.49 Close 19.51 Volume 26.7M Chg -0.81 (-3.99%)



DOW (Dow Chemical Co.) NYSE
19-Mar-2008

© StockCharts.com

Open 38.00 High 38.26 Low 36.40 Close 36.41 Volume 8.9M Chg -1.62 (-4.26%)



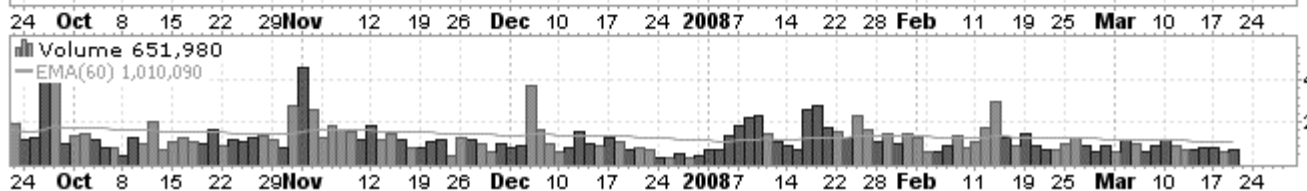
BGC (General Cable Corp.) NYSE

© StockCharts.com

19-Mar-2008

Open 57.88 High 59.46 Low 54.68 Close 54.82 Volume 652.0K Chg -3.35 (-5.76%) ▼

▲ BGC (Daily) 54.82



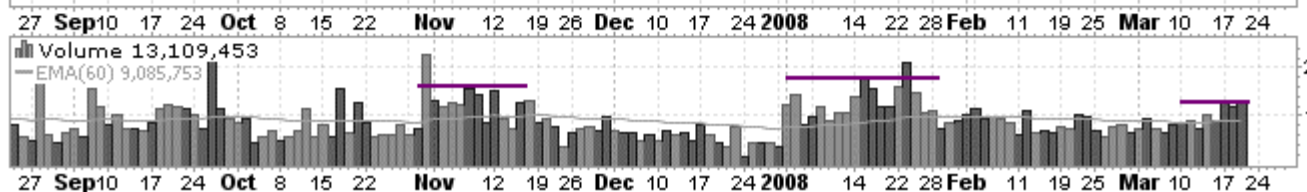
NEM (Newmont Mining Corp.) NYSE

© StockCharts.com

19-Mar-2008

Open 50.36 High 50.80 Low 48.60 Close 48.72 Volume 13.1M Chg -2.17 (-4.26%) ▼

▲ NEM (Daily) 48.72



MON (Monsanto Co.) NYSE

19-Mar-2008

Open 112.51 High 113.71 Low 98.05 Close 98.87 Volume 12.9M Chg -13.21 (-11.79%)

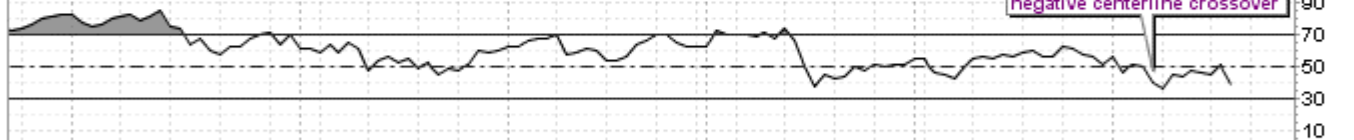
© StockCharts.com

MON (Daily) 98.87

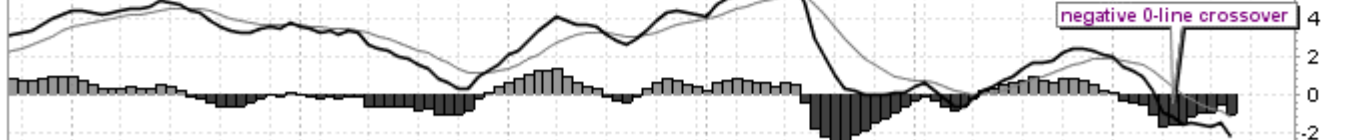
MON has broken out of a head & shoulders formation on the minor trend, today. The pattern calls for a move to 80 or even lower, unless previous minor support levels at 95 and 87 can prop up the stock over the coming weeks.



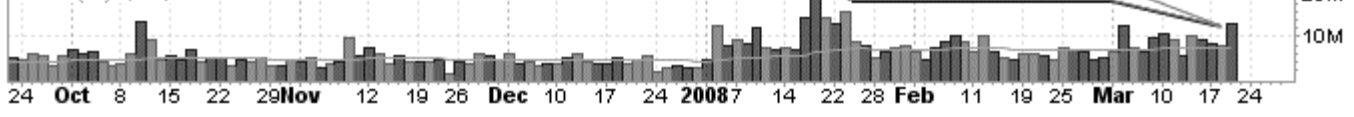
RSI(14) 38.65



MACD(12,26,9) -2.260, -1.192, -1.068



Volume 12,881,338
EMA(60) 7,542,178

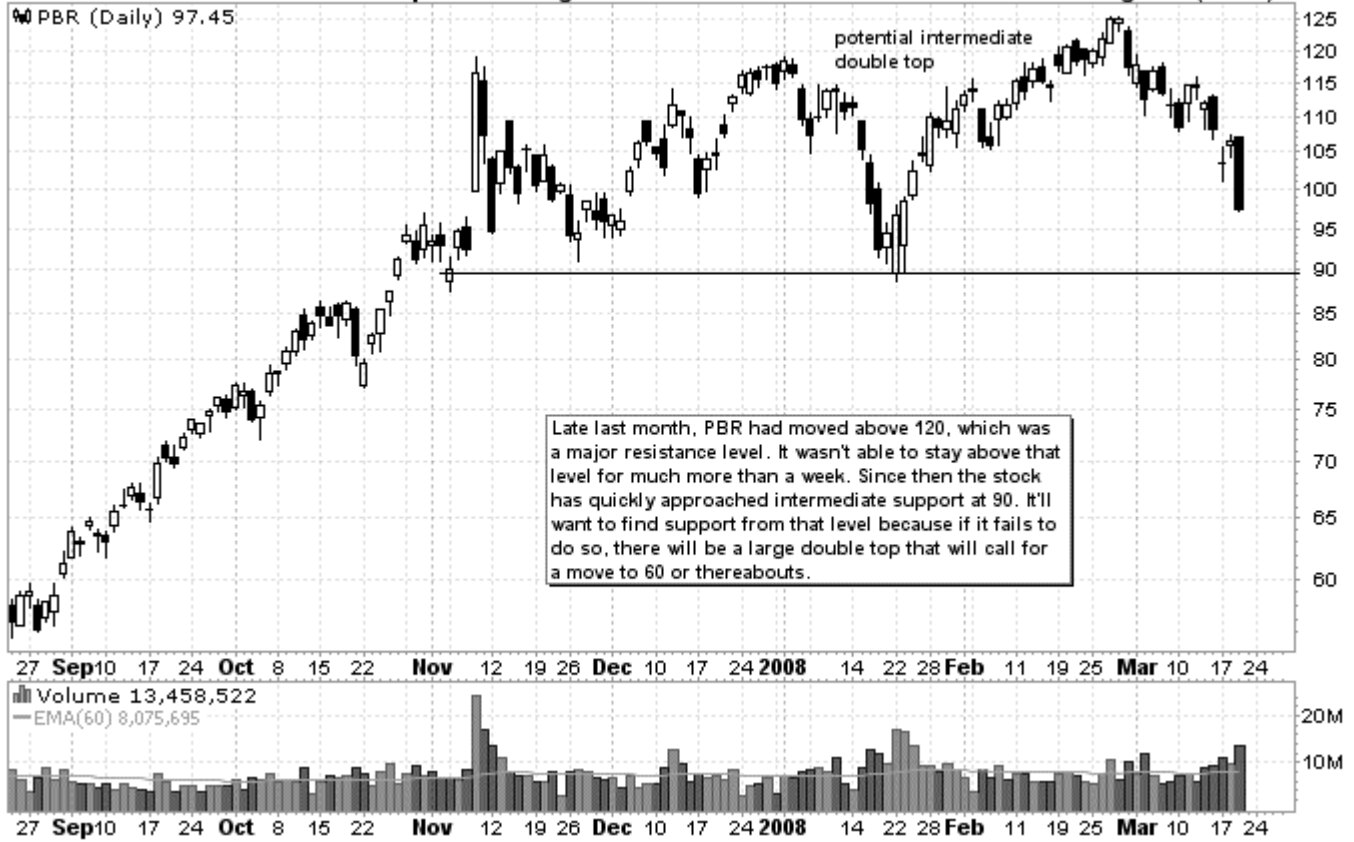


PBR (Petroleo Brasileiro (Petrobras)) NYSE

19-Mar-2008

Open 106.99 High 107.03 Low 97.29 Close 97.45 Volume 13.5M Chg -9.21 (-8.63%)

© StockCharts.com



PKX (Pohang Iron & Steel (Posco)) NYSE

19-Mar-2008

Open 115.32 High 117.88 Low 109.50 Close 109.50 Volume 1.2M Chg -5.99 (-5.19%)

© StockCharts.com

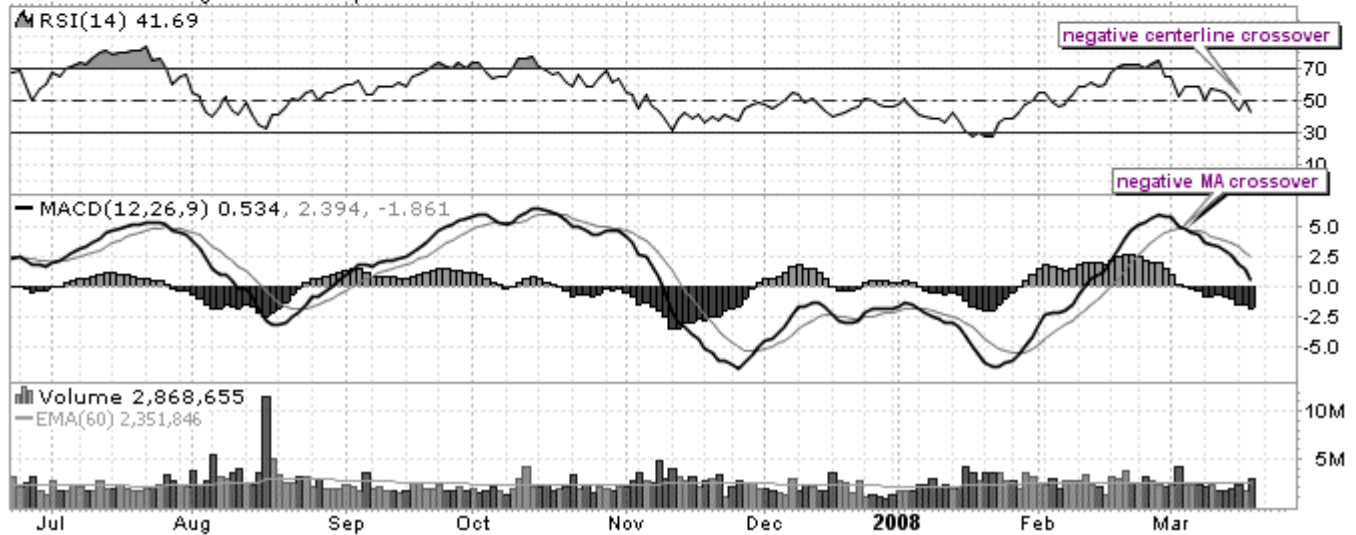


PCU (Southern Peru Copper Corp.) NYSE

© StockCharts.com

19-Mar-2008

Open 106.89 High 106.89 Low 98.78 Close 99.46 Volume 2.9M Chg -7.55 (-7.06%)

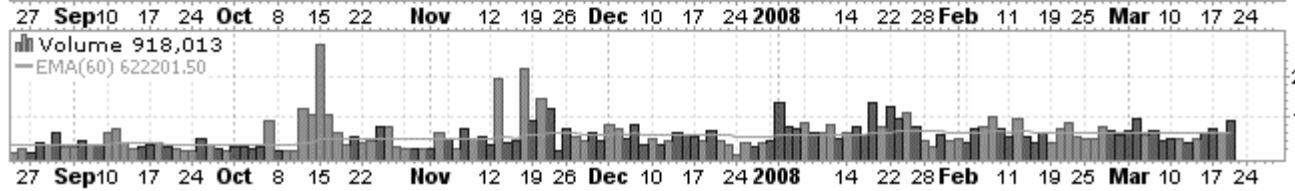
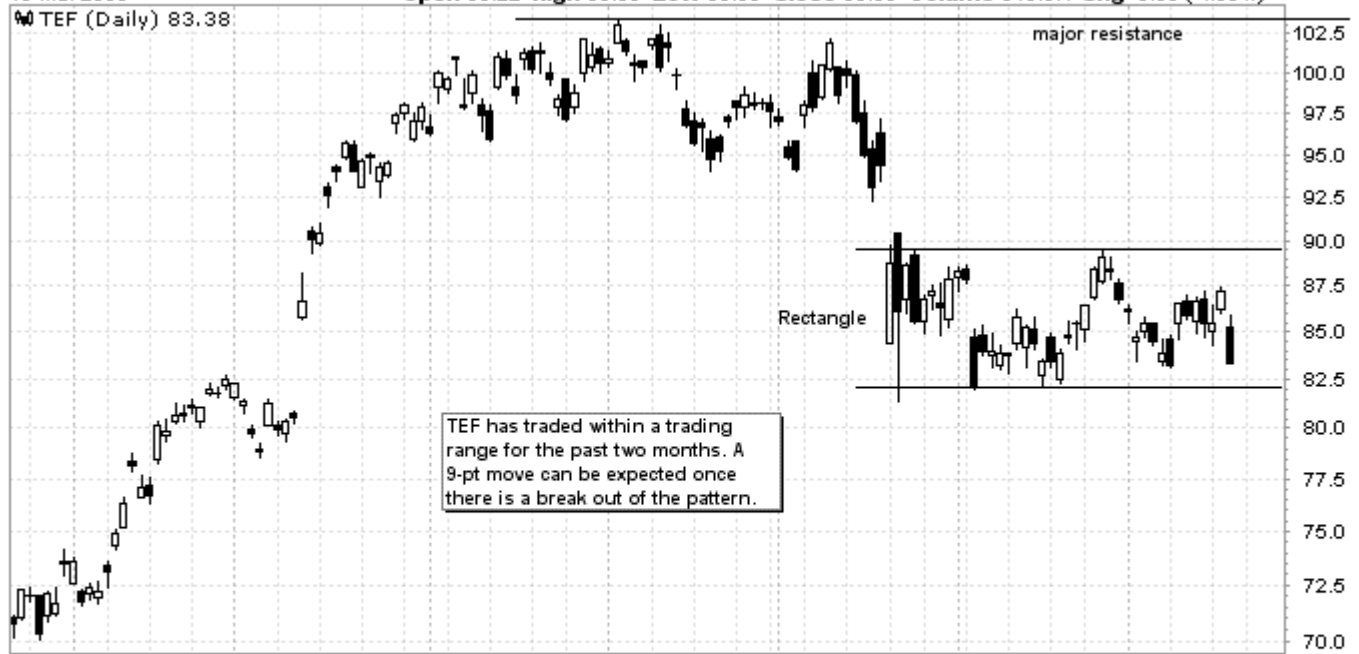


TEF (Telefonica Sa) NYSE

19-Mar-2008

© StockCharts.com

Open 85.22 High 85.86 Low 83.38 Close 83.38 Volume 918.0K Chg -3.80 (-4.36%) ▼

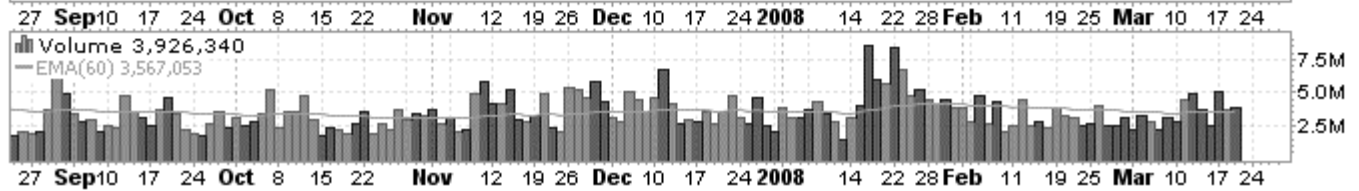


VIP (Vimpel Communications) NYSE

19-Mar-2008

© StockCharts.com

Open 31.82 High 32.00 Low 29.66 Close 30.10 Volume 3.9M Chg -1.89 (-5.91%) ▼



That's it for this issue of Purely Technical.

Good luck with your trading!

TheMarketMessenger.com

TheMarketMessenger

Purely Technical

Disclaimer:

TheMarketMessenger.com is owned by *TheMarketMessenger, LLC*. All material presented within TheMarketMessenger.com website, including this newsletter, has been provided for general informational purposes only. It does not constitute an offer to sell or a solicitation of an offer to buy any security or financial product that may be referenced herein. Further, the information contained in this informational newsletter does not constitute investment advice or investment advisory services. All securities trading, whether in stocks, options, or other investment vehicles, is speculative in nature and involves substantial risk of loss. We shall not be held responsible for any losses incurred as a result of the use of any information provided herein. You are strongly encouraged to seek personal advice from your professional investment advisor and to make independent investigations before acting on any information that we publish.

Subscribe to **Purely Technical** by visiting www.themarketmessenger.com
and filling in the form titled **"Receive Our Newsletter via Email"**.